



## Light is OSRAM

Managing innovation at the speed of light

### Largest product portfolio for automotive interior

#### Ambient/Task Lighting

##### Advanced Power TOPLED®



**Lx G6CP**  
(W, CW)  
**LUW GVCP**

##### OSLON® SX / SX ECE



**LUW CN5M**  
**LUW CN7M**

##### SIDELED®



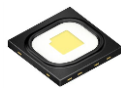
**Lx A676**  
(P, G, Y, O, A, S)  
**Lx A67F**  
(Y, O, A, R, S)  
**Lx A673**  
(B, T, W)  
**Lx A6SG**  
(B, T, W, CB)

##### OSLON® Black



**Lxx H9GP**  
(CW, UW)

##### OSLON® Black Flat



**LUW HWQP**

##### SYNOS® E4014



**KW DPLS32.EC**

##### Mini TOPLED®



**Lx M676**  
(P, G, Y, O, A, S)  
**Lx M67F**  
(Y, O, A, S)



**LW M673**  
**Lx M67C**  
(W, CB)



**LCW MVSG.EC**  
**LW MVSG**

##### MULTILED®



**LRTB GVSG**



**LTRB GFSF**

##### TOPLED® E1608



**Kx DELxS1.xx**  
(O, P, S, T, Y, W)

**A = Amber**  
615nm

**B = Blue**  
471nm

**CB = Converted Blue**  
x=0.2, y=0.3

**CG = Converted Green**  
0.32 / 0.64

**CW = Warm White**  
typ. 2700-4500K

**D = Deep Blue**  
453nm

**G = Green**  
570nm

**O = Orange**  
606nm

**P = Pure Green**  
560nm

**R = Red**  
625nm

**S = Super Red**  
633nm

**T = True Green**  
529nm

**UW = Ultra White**  
typ. 6500K

**V = Verde Green**  
505nm

**W = White**  
typ. 5600K

**Y = Yellow**  
587nm



Light is OSRAM

Status 07-2017 - OSRAM Opto Semiconductors - Images not to scale  
Subject to change without notice - Errors and omission excepted - Check website for datasheets

**OSRAM**  
Opto Semiconductors



## Light is OSRAM

Managing innovation at the speed of light

### Largest product portfolio for automotive interior

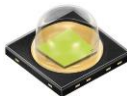
#### HUD (Head-up Display)

**SYNIOS® P2720**



KW DMLN31.SB

**OSLON® Black**



LUW H9GP

**OSLON® Compact CL**



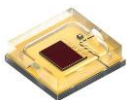
LUW CEUP.HD

**Power TOPLED® Lens**

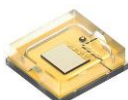


LS E63F

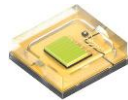
**OSRAM OSTAR® Projection**



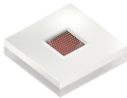
LE A Q8WP



LE B Q8WP



LE CG Q8WP



KR CSLNM1.23



KP CSLNM1.F1



KB CSLNM1.14

A = Amber  
615nm

B = Blue  
471nm

CB = Converted Blue  
x=0.2, y=0.3

CG = Converted Green  
0.32 / 0.64

CW = Warm White  
typ. 2700-4500K

D = Deep Blue  
453nm

G = Green  
570nm

O = Orange  
606nm

P = Pure Green  
560nm

R = Red  
625nm

S = Super Red  
633nm

T = True Green  
529nm

UW = Ultra White  
typ. 6500K

V = Verde Green  
505nm

W = White  
typ. 5600K

Y = Yellow  
587nm

#### LCD Backlighting

**Mini TOPLED®**



Lx M676  
(P, G, Y, O, A, S)  
Lx M67F  
(Y, O, A, S)



LW M673  
Lx M67C  
(W, CB)



LCW MVSG.EC  
LW MVSG

**SYNIOS® E2314**



KW DNLS31.xx

**SYNIOS® E4014**



KW DPLS31.SB

**SIDELED®**



Lx A676  
(P, G, Y, O, A, S)  
Lx A67F  
(Y, O, A, R, S)  
Lx A673  
(B, T, W)  
Lx A6SG  
(B, T, W, CB)



Lx T673  
(B, T, W)  
LW T6SG  
(UW, W)  
LW TVSG.xx



Lx T676  
(P, G, Y, O, A, S)  
Lx T67D  
(Y, O, A, R, S)  
Lx T67F  
(P, G, Y, O, A, R, S)  
Lx TTSD  
(B, T, W, CB)



Light is OSRAM

Status 07-2017 - OSRAM Opto Semiconductors - Images not to scale  
Subject to change without notice - Errors and omission excepted - Check website for datasheets

**OSRAM**  
Opto Semiconductors