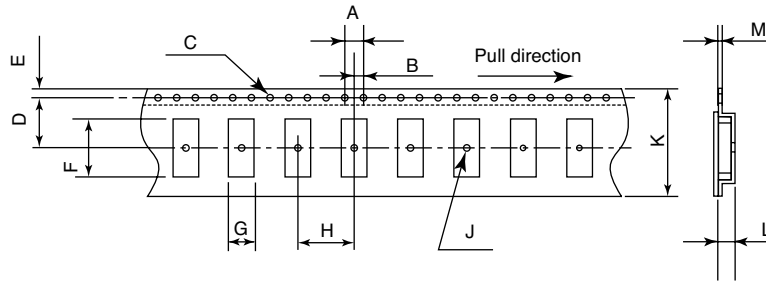


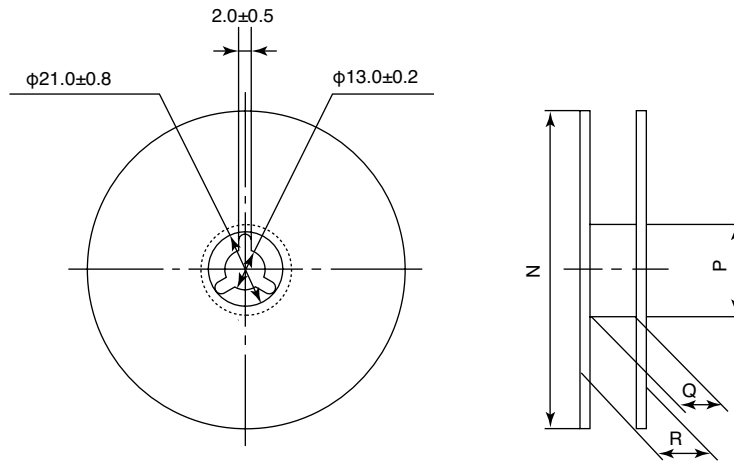
■ Taping Package

The taping package as shown below is standard for surface-mount type crystal units.

■ Tape



■ Reel



	NX1255GB /GC	NX8045GB /GD	NX5032GA /GB/GC	NX5032SA	NX5032SD	NX3225SA/GA /GB/GD/SC	NX2520SA	NX2016AA /AB	NX1612AA	NX3215SA
A	4.0±0.1	4.0±0.1	4.0±0.1	4.0±0.1	4.0±0.1	4.0±0.1	4.0±0.1	4.0±0.1	4.0±0.1	4.0±0.1
B	2.0±0.1	2.0±0.1	2.0±0.1	2.0±0.1	2.0±0.1	2.0±0.1	2.0±0.1	2.0±0.1	2.0±0.1	2.0±0.1
C	φ1.5 ^{+0.1} ₋₀	φ1.5 ^{+0.1} ₋₀	φ1.5 ^{+0.1} ₋₀	φ1.5 ^{+0.1} ₋₀	φ1.5 ^{+0.1} ₋₀	φ1.5 ^{+0.1} ₋₀	φ1.5 ^{+0.1} ₋₀	φ1.55±0.05	φ1.5 ^{+0.1} ₋₀	φ1.5 ^{+0.1} ₋₀
D	11.5±0.1	7.5±0.1	5.5±0.1	5.5±0.1	5.5±0.1	3.5±0.05	3.5±0.05	3.5±0.05	3.5±0.05	5.5±0.05
E	1.75±0.1	1.75±0.1	1.75±0.1	1.75±0.1	1.75±0.1	1.75±0.1	1.75±0.1	1.75±0.1	1.75±0.1	1.75±0.1
F	12.2 ^{+0.3} _{-0.1}	8.4±0.1	5.4±0.1	5.4±0.1	5.4±0.1	3.5±0.1	2.8±0.1	2.25±0.1	1.8±0.1	3.4±0.1
G	5.9 ^{+0.3} _{-0.1}	4.8±0.1	3.5±0.1	3.5±0.1	3.5±0.1	2.8±0.1	2.3±0.1	1.85±0.1	1.4±0.1	1.7±0.1
H	12.0±0.1	8.0±0.1	8.0±0.1	8.0±0.1	8.0±0.1	4.0±0.1	4.0±0.1	4.0±0.1	4.0±0.1	4.0±0.1
J	φ2.1±0.1	φ1.5±0.1	φ1.5 ^{+0.1} ₋₀	φ1.6±0.1	φ1.6±0.1	φ1.15±0.1	φ1.05±0.05	φ1.05±0.05	φ0.5±0.05	φ1.0±0.1
K	24.0±0.2	16.0±0.2	12.0±0.2	12.0±0.2	12.0±0.2	8.0±0.2	8.0±0.2	8.0±0.2	8.0±0.2	12.0±0.3
L	3.0±0.1 (*2.4±0.1)	2.0±0.1	1.4±0.1	1.0±0.1	1.0±0.1	1.0±0.1	0.75±0.1	0.65±0.1	0.45±0.1	1.0±0.1
M	0.3±0.05	0.3±0.05	0.3±0.05	0.25±0.05	0.25±0.05	0.25±0.05	0.25±0.05	0.25±0.05	0.25±0.05	0.3±0.05
N	φ330±2	φ330±2	φ180 ⁺⁰ ₋₃	φ330±2	φ180 ⁺⁰ ₋₃	φ180 ⁺⁰ _{-1.5}	φ180 ⁺⁰ _{-1.5}	φ180 ⁺⁰ _{-1.5}	φ180 ⁺⁰ _{-1.5}	φ180 ⁺⁰ ₋₃
P	φ80±1	φ100±1	φ60 ⁺¹ ₋₀	φ100±1	φ60 ⁺¹ ₋₀	φ60 ⁺¹ ₋₀	φ60 ⁺¹ ₋₀	φ60 ⁺¹ ₋₀	φ60 ⁺¹ ₋₀	φ60 ⁺¹ ₋₀
Q	25.5±0.5	17.5±0.5	13.0±0.3	13.5±0.5	13.0±0.3	9.0 ^{+0.3} ₋₀	9.0 ^{+0.3} ₋₀	9.0 ^{+0.3} ₋₀	9.0 ^{+0.3} ₋₀	13.0±0.3
R	Max. 30.5	Max. 22.5	Max. 16.5	Max. 18.5	15.4±1.0	Max. 12.4	Max. 12.4	Max. 12.4	Max. 12.4	15.4±1.0
QTY	1000	1000	1000	5000	1000	3000	3000	3000	3000	3000

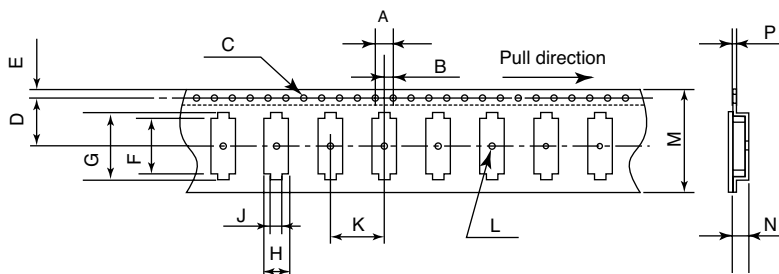
*NX1255GC

Please visit the NDK homepage (<http://www.ndk.com/>) for the latest information.

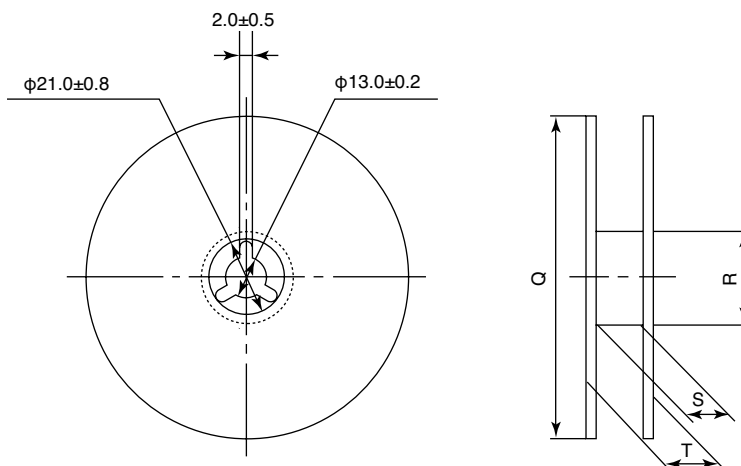
■ Taping Package

The taping package as shown below is standard for AT-41CD2, AT-51CD2 and AT-51AD/CD.

■ Tape



■ Reel

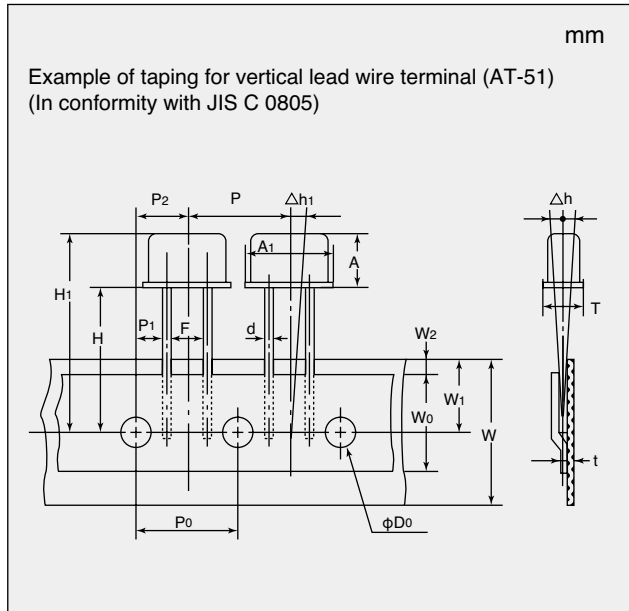


	AT-41CD2	AT-51CD2	AT-51AD AT-51CD
	A	4.0±0.1	4.0±0.1
B	2.0±0.1	2.0±0.1	2.0±0.1
C	$\phi 1.5^{+0.1}_{-0}$	$\phi 1.5^{+0.1}_{-0}$	$\phi 1.5^{+0.1}_{-0}$
D	11.5±0.1	11.5±0.1	11.5±0.1
E	1.75±0.1	1.75±0.1	1.75±0.1
F	11.7±0.1	11.7±0.1	11.7±0.1
G	15.6±0.1	15.6±0.1	15.6±0.1
H	5.0±0.1	5.0±0.1	5.4±0.1
J	2.2±0.1	2.2±0.1	2.5±0.1
K	12.0±0.1	8.0±0.1	8.0±0.1
L	$\phi 2.1 \pm 0.1$	$\phi 2.1 \pm 0.1$	$\phi 2.2 \pm 0.1$
M	24.0±0.3	24.0±0.3	24.0±0.3
N	4.55±0.1	6.1±0.1	7.1±0.1
P	0.4±0.05	0.4±0.05	0.5±0.05
Q	$\phi 330$	$\phi 330$	$\phi 330$
R	$\phi 100$	$\phi 100$	$\phi 100$
S	25.5±1	25.5±1	25.5±1
T	29.5±1	29.5±1	29.5±1
Quantity	1000	1000	1000

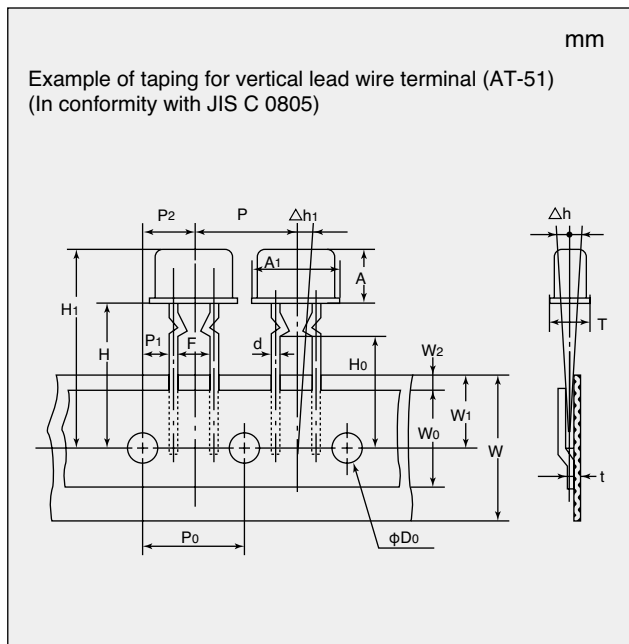
Please visit the NDK homepage (<http://www.ndk.com/>) for the latest information.

Radial Taping Package

AT-51type crystal units are compatible with radial taping.



Item	Symbol	AT-51 Size
Body size	A ₁ ×A	Max. 11.05×5.08
Body thickness	T	Max. 4.65
Lead diameter	d	φ0.43 ^{+0.05} _{-0.03}
Pitch of component	P	12.7±1.0
Feed hole pitch	P ₀	12.7±0.3
Hole center to lead Feed hole center to component center	P ₁	3.85±0.7
	P ₂	6.35±1.3
Lead to lead distance	F	5.0±0.8
Product inclination	Δh	0±2.0
Tape width	W	18.0 ^{+1.0} _{-0.5}
Hold down tape width	W ₀	Min. 12.5
Hold position	W ₁	9.0 ^{+0.75} _{-0.5}
Hold down tape position	W ₂	Max. 3.0
Position of product bottom surface	H	18.2±0.75
Position of product upper surface	H ₁	Max. 24.5
Feed hole diameter	D ₀	φ4.0±0.2
Total tape thickness	t	0.7±0.2
Product inclination	Δh ₁	0±2.0



Item	Symbol	AT-51 Size
Body size	A ₁ ×A	Max. 11.05×5.08
Body thickness	T	Max. 4.65
Lead diameter	d	φ0.43 ^{+0.05} _{-0.03}
Pitch of component	P	12.7±1.0
Feed hole pitch	P ₀	12.7±0.3
Hole center to lead Feed hole center to component center	P ₁	3.85±0.7
	P ₂	6.35±1.3
Lead to lead distance	F	5.0±0.8
Product inclination	Δh	0±2.0
Tape width	W	18.0 ^{+1.0} _{-0.5}
Hold down tape width	W ₀	Min. 12.5
Hold position	W ₁	9.0 ^{+0.75} _{-0.5}
Hold down tape position	W ₂	Max. 3.0
Position of product bottom surface	H	20.2±0.75
Lead clinch height	H ₀	16.0±0.5
Position of product upper surface	H ₁	Max. 26.5
Feed hole diameter	D ₀	φ4.0±0.2
Total tape thickness	t	0.7±0.2
Product inclination	Δh ₁	0±2.0

Please visit the NDK homepage (<http://www.ndk.com/>) for the latest information.