



Ledil Oy  
Salorankatu 10  
FI-24240 SALO  
FINLAND  
[www.ledil.com](http://www.ledil.com)

## Ledil Globally

---

Local sales and technical support available in following countries  
Benelux, China, Germany, Italy, Portugal, Spain, UK, USA.  
See [www.ledil.com](http://www.ledil.com)

Shipping locations  
Salo, Finland  
Hong Kong, China

Authorized Distribution Partners  
See [www.ledil.com/where\\_to\\_buy](http://www.ledil.com/where_to_buy)

---



Q2/2012

## SINGLE LENSES



**LISA**  
D= 10.8 - 11 MM  
PMMA

**CREE XP-E / XP-G**  
CP11627\_LISA-RS  
CP10641\_LISA-SS



**LISA2-PIN**  
D= 9.9 MM  
PMMA

**CREE XP-E / XP-G**  
FP11055\_LISA2-RS-PIN  
FP10995\_LISA2-M-PIN  
FP11125\_LISA2-O-PIN  
FP11851\_LISA2-O-90-PIN  
FP10996\_LISA2-W-PIN  
FP10997\_LISA2-WW-PIN  
FP11429\_LISA2-WWW-PIN

**CREE XB-D**  
FP10995\_LISA2-M-PIN  
FP10996\_LISA2-W-PIN  
FP10997\_LISA2-WW-PIN  
FP11429\_LISA2-WWW-PIN



**LISA2-CLIP**  
D= 9.9 MM  
PMMA

**CREE XP-E / XP-G**  
FP11085\_LISA2-RS-CLIP  
FP11075\_LISA2-M-CLIP  
FP11121\_LISA2-O-CLIP  
FP11856\_LISA2-O-90-CLIP  
FP11076\_LISA2-W-CLIP



**TINA**  
D= 16.1 MM  
PMMA

**CREE XP-E / XP-G**  
FA10887\_TINA-RS  
FA10644\_TINA-D  
FA10645\_TINA-M  
FA11200\_TINA-O  
FA10838\_TINA-W  
FA11019\_TINA-WW

**CREE MX6 / MX3**  
FA10888\_TINA-RS  
FA10646\_TINA-D  
FA10647\_TINA-M  
FA11201\_TINA-O  
FA10839\_TINA-W  
FA10901\_TINA-WW



**TINA2**  
D= 16.1 MM  
PMMA

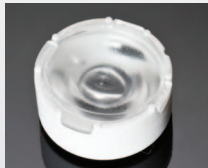
**CREE XP-E / XP-G**  
CA11016\_TINA2-RS  
CA11420\_TINA2-D  
CA11017\_TINA2-M  
CA11052\_TINA2-O  
CA12056\_TINA2-W

CP12677\_TINA2-RS  
CP12678\_TINA2-D  
CP12679\_TINA2-M  
CP12680\_TINA2-O  
CP12681\_TINA2-W

**CREE XB-D**  
CP12671\_TINA2-D  
CP12672\_TINA2-M  
CP12673\_TINA2-O  
CP12674\_TINA2-W

**CREE XT-E**  
CA11017\_TINA2-M  
CA11052\_TINA2-O  
CA11420\_TINA2-D

**CREE MX6 / MX3**  
CA11171\_TINA2-RS  
CA11172\_TINA2-D  
CA11173\_TINA2-O CA11174\_TINA2-M CA11175\_TINA2-W  
CA11176\_TINA2-WW



**TINA3**  
D= 16.1 MM  
PMMA

**CREE XP-E / XP-G**  
FA11905\_TINA3-S  
FA11870\_TINA3-OO  
FA11824\_TINA3-W  
FA11825\_TINA3-WW  
FA11826\_TINA3-WWW

**CREE XB-D**  
FA11824\_TINA3-W  
FA11870\_TINA3-OO

**CREE XT-E**  
FA11902\_TINA3-W  
FA11904\_TINA3-WWW

**CREE XM-L**  
FA11905\_TINA3-S  
FA11902\_TINA3-W  
FA11903\_TINA3-WW  
FA11904\_TINA3-WWW



**TWIDDLE**  
D= 21.6 MM  
PMMA

**CREE MX6 / MX3**  
FA10734\_TWIDDLE-D  
FA10736\_TWIDDLE-M



**IRINA**  
D= 24.7 MM  
PMMA

**CREE XP-E / XP-G**  
C11421\_IRINA-RS

# SINGLE LENSES



**HEIDI**  
D= 21.6 MM  
PMMA

## CREE XP-E / XP-G

CA11663\_HEIDI-RS  
CA12242\_HEIDI-SS  
CA11264\_HEIDI-D  
CA11265\_HEIDI-M  
CA11266\_HEIDI-O  
CA11267\_HEIDI-O-90  
CA11268\_HEIDI-W  
CA12079\_HEIDI-W2

## CREE XB-D

CA11663\_HEIDI-RS  
CA11264\_HEIDI-D  
CA11265\_HEIDI-M  
CA11266\_HEIDI-O  
CA11267\_HEIDI-O-90  
CA11268\_HEIDI-W  
CA12079\_HEIDI-W2



**EMILY**  
D= 26 MM  
PMMA

## CREE XP-E / XP-G

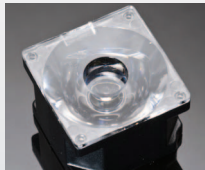
CA11387\_EMILY-SS  
CA11388\_EMILY-M  
CA11391\_EMILY-M2  
CA11389\_EMILY-O  
CA11390\_EMILY-O-90  
CA11934\_EMILY-W

## CREE XT-E

CA12062\_EMILY-SS  
CA12064\_EMILY-M  
CA11934\_EMILY-W

## CREE XM-L

CA12062\_EMILY-D  
CA12064\_EMILY-M  
CA12070\_EMILY-M2  
CA12066\_EMILY-O  
CA12068\_EMILY-O-90  
CA11934\_EMILY-W



**ROSE**  
21.6 MM X 21.6 MM  
PC

## CREE XP-E / XP-G

FA10668\_CXP-RS  
FA10667\_CXP-SS  
FA10666\_CXP-D  
FA10665\_CXP-M  
FA10669\_CXP-O  
FA11153\_CXP-O-90  
FA10708\_CXP-W

## CREE MC-E

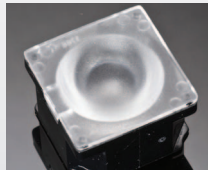
FA10679\_CMC-RS  
FA10678\_CMC-SS  
FA10677\_CMC-D  
FA10676\_CMC-M  
FA10680\_CMC-O  
FA11155\_CMC-O-90  
FA10714\_CMC-W

## CREE XM-L

FA11908\_CXM-SS  
FA11909\_CXM-RS  
FA11910\_CXM-D  
FA11911\_CXM-M  
FA11912\_CXM-O  
FA11155\_CXM-O-90  
FA11942\_CXM-W

## CREE MX6 / MX3

FA10336\_NIS83-MX-RS  
FA10337\_NIS83-MX-SS  
FA10338\_NIS83-MX-D  
FA10339\_NIS83-MX-M  
FA10340\_NIS83-MX-O  
FA10903\_NIS83-MX-W  
FA11151\_NIS83-MX-O-90



**LAURA**  
21.6 MM X 21.6 MM  
PMMA

## CREE XP-E / XP-G

CA11353\_LAURA-RS  
CA11643\_LAURA-SS  
CA11360\_LAURA-D  
CA11355\_LAURA-M  
CA11365\_LAURA-O  
CA11525\_LAURA-REF-W  
CA12343\_LAURA-W  
CA11766\_LAURA-WW

## CREE XT-E

CA11360\_LAURA-D  
CA11355\_LAURA-M  
CA12343\_LAURA-W



**LAURA**  
21.6 MM X 21.6 MM  
PMMA

## CREE XP-E / XP-G

CA11959\_LAURA-RS-PIN  
CA12011\_LAURA-SS-PIN  
CA11960\_LAURA-D-PIN  
CA11837\_LAURA-M-PIN  
CA12012\_LAURA-O-PIN  
CA12344\_LAURA-W-PIN

## CREE XB-D

CA12011\_LAURA-RS-PIN  
CA11837\_LAURA-M-PIN  
CA12012\_LAURA-O-PIN  
CA12344\_LAURA-W-PIN  
CA12325\_LAURA-WW-PIN

# SINGLE LENSES



**LAURA**  
21.6 MM X 21.6 MM  
PMMA

## CREE XP-E / XP-G

CP12631\_LAURA-RS-PG  
CP12634\_LAURA-SS-PG  
CP12632\_LAURA-D-PG  
CP12633\_LAURA-M-PG  
CP12635\_LAURA-O-PG  
CP12636\_LAURA-W-PG  
CP12637\_LAURA-WW-PG

## CREE XB-D

CP12631\_LAURA-RS-PG  
CP12634\_LAURA-SS-PG  
CP12632\_LAURA-D-PG  
CP12633\_LAURA-M-PG  
CP12635\_LAURA-O-PG  
CP12636\_LAURA-W-PG  
CP12637\_LAURA-WW-PG



**LEILA**  
D= 21.6 MM  
PMMA

## CREE XP-E / XP-G

FA10661\_LXP-RS  
FA10663\_LXP-D  
FA10660\_LXP-M  
FA11450\_LXP-M2  
FA11116\_LXP-O-90  
FA10662\_LXP-REC  
FA10832\_LXP-W

CA11481\_LXP2-RS  
CA11482\_LXP2-D  
CA11483\_LXP2-M  
CA11484\_LXP2-O-90  
CA12392\_LXP2-W

## CREE XB-D

CA12584\_LXB2-RS2  
CA12665\_LXB2-D  
CA12666\_LXB2-M  
CA12667\_LXB2-W

## CREE XT-E

FA10832\_LXP-W

CA11482\_LXP2-D  
CA11483\_LXP2-M

4



**LEILA**  
D= 21.6 MM  
PMMA

## CREE MC-E

FA10613\_LM1-RS  
FA10650\_LM1-D  
FA10614\_LM1-M  
FA11447\_LM1-M2  
FA11067\_LM1-O-90  
FA10615\_LM1-REC

## CREE XM-L

FA11937\_LXM-RS  
FA11938\_LXM-D  
FA11939\_LXM-M  
FA11941\_LXM-REC

## CREE MX6 / MX3

FA10696\_LN2-RS  
FA10695\_LN2-D  
FA10697\_LN2-M  
FA11452\_LN2-M2  
FA11108\_LN2-O-90  
FA10698\_LN2-REC

## CREE XP-E / XP-G

CP11631\_LXP3-RS  
CP11632\_LXP3-D  
CP11633\_LXP3-M  
CP11634\_LXP3-O-90  
CP12395\_LXP3-W

## CREE XB-D

CP12583\_LXB3-RS2  
CP12668\_LXB3-D  
CP12669\_LXB3-M  
CP12670\_LXB3-W



**EVA**  
D= 35 MM  
PMMA

## CREE MC-E / XT-E / XM-L

C12041\_EVA-S  
C10684\_EVA-D  
C10685\_EVA-M  
C10686\_EVA-W  
C10909\_EVA-WW



**EVA**  
D= 37.7 MM  
PMMA

## CREE XM-L

CA12055\_EVA-S  
CA12057\_EVA-D  
CA12058\_EVA-M  
CA12059\_EVA-W  
CA12060\_EVA-WW

CP12196\_EVA-S  
CP12197\_EVA-D  
CP12198\_EVA-M  
CP12199\_EVA-W  
CP12200\_EVA-WW



**MIRA**  
D= 32.4 MM  
PC

## CREE MT-G

C12500\_MIRA-M  
C12501\_MIRA-W  
C12502\_MIRA-WW

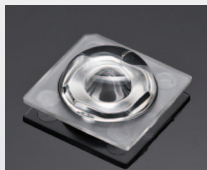


**MIRA (with holder)**  
D= 35 MM  
PC

## CREE MT-G

CA12503\_MIRA-M  
CA12504\_MIRA-W  
CA12505\_MIRA-WW

## SPECIALTY PRODUCTS



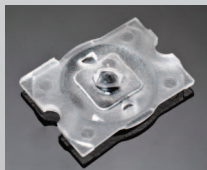
**SIRI-A**  
13.9 MM X 13.9 MM  
PMMA

**CREE XP-G**  
C12473\_SIRI-A  
CA12474\_SIRI-A



**JULIA-A**  
18.9 MM X 4.7 MM  
PMMA

**CREE XP-E / XP-G**  
F11947\_JULIA-A  
FA11948\_JULIA-A



**LOTTA-A**  
15.4 MM X 19.6 MM  
PMMA

**CREE XP-E / XP-G**  
C11518\_LOTTA-A  
CA11519\_LOTTA-A



**RGBX**  
D= 30 MM  
PMMA

**CREE MC-E / MC-E RGB**  
CP10961\_RGBX-SS  
CP10944\_RGBX-M  
CP10945\_RGBX-O



**FLARE-B**  
29.0 MM X 24.5 MM X  
14.5 MM  
PMMA

**CREE XP-E / XP-G**  
C10946\_FLARE-B  
CA10932\_FLARE-B



**IRIS**  
D= 38 MM  
PMMA

**CREE MC-E**  
CN10861\_IRIS  
CN10953\_IRIS-M  
CN11470\_IRIS-O

**CREE XP-E / XP-G**  
FCN12076\_IRIS-SCREW  
FCA12077\_IRIS



**EMILY-WAS**  
D= 26 MM  
PMMA

**CREE XP-E / XP-G / XM-L**  
CA11998\_EMILY-SS-WAS  
CA12000\_EMILY-O-WAS



**SOPHIE**  
150 X 20 MM  
PMMA

**CREE XP-E / XP-G**  
C12446\_SOPHIE



**STRADA-S**  
13.9 MM X 19.6 MM  
PMMA

**CREE XP-E / XP-G**  
C12114\_STRADA-S  
CA12115\_STRADA-S



**STRADA-S**  
15.5MM X 19.6 MM  
PMMA

**CREE XP-E / XP-G**  
CA11248\_STRADA-S  
C11249\_STRADA-S



**RITA**  
D= 36 X 29 MM  
PC

**CREE XP-E / XP-G / XM-L /  
XB-D / XT-E**  
C12512\_RITA-A  
CA12514\_RITA-A

# REFLECTORS



**REGINA**  
D= 19 MM  
METALLIZED PC

CREE XP-E / XP-G  
C11347\_REGINA



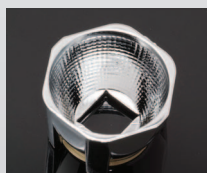
**TYRA (TYCO)**  
D= 40 MM  
METALLIZED PC

CREE MP-L  
C11394\_TYRA-S  
C11395\_TYRA-M  
C11396\_TYRA-W



**LAURA REFLECTOR**  
21.6 MM X 21.6 MM  
PMMA

CREE XP-E / XP-G  
CA11525\_LAURA-REFL-W



**BOOM**  
D= 22.2 MM  
METALLIZED PC

CREE MC-E  
CA10716\_BOOM-S  
CA10928\_BOOM-M  
CA10929\_BOOM-W



**TYRA2**  
D= 40 MM  
METALLIZED PC

CREE MP-L  
CA11475\_TYRA2-S  
CA11476\_TYRA2-M  
CA11477\_TYRA2-W



**LISA2 REFLECTOR**  
D= 9.9 MM  
PC

CREE XP-E / XP-G  
C12469\_LISA2-R-PIN

CREE XB-D  
C12469\_LISA2-R-PIN



**MINNIE**  
D= 32.4 MM  
METALLIZED PC

CREE MT-G  
C12095\_MINNIE-M  
C11862\_MINNIE-W  
C12097\_MINNIE-WWW



**BROOKE-SCR**  
D= 45 MM  
METALLIZED PC

CREE CXA20  
C12083\_BROOKE-SCR-M  
C12084\_BROOKE-SCR-W



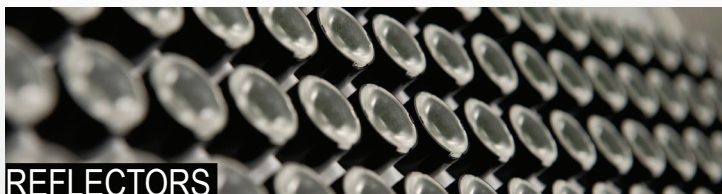
**MINNIE (with holder)**  
D= 35 MM  
METALLIZED PC

CREE MT-G  
CA12239\_MINNIE-M  
CA12096\_MINNIE-W  
CA12240\_MINNIE-WWW



**BARBARA**  
D= 70 MM  
METALLIZED PC

CREE CXA20  
C11552\_BARBARA-S  
C11553\_BARBARA-W  
C12461\_BARBARA-WW



## REFLECTORS



**MIRELLA**  
D= 50 MM  
METALLIZED PC

### CREE XM-L

C12480\_MIRELLA-50-S-PIN  
C12481\_MIRELLA-50-M-PIN  
C12482\_MIRELLA-50-W-PIN  
CN12486\_MIRELLA-50-S-PIN-DL  
CN12487\_MIRELLA-50-M-PIN-DL  
CN12488\_MIRELLA-50-W-PIN-DL



**LENINA**  
D= 74 MM  
METALLIZED PC

### CREE CXA20

CN12638\_LENINA-S  
CN12639\_LENINA-M  
CN12640\_LENINA-W  
CN12641\_LENINA-S-DL  
CN12642\_LENINA-M-DL  
CN12643\_LENINA-W-DL



**LENA**  
D= 111 MM  
METALLIZED PC

### CREE CXA20

CN12106\_LENA-S  
CN12107\_LENA-S-DL  
CN12163\_LENA-M  
CN12167\_LENA-M-DL  
CN12108\_LENA-W  
CN12109\_LENA-W-DL

## MULTIPLE LENSES



**SATU**  
D= 21.8 MM (3UP)  
PMMA

**CREE XP-E / XP-G**  
C11916\_SATU-S  
C11917\_SATU-O  
C11602\_SATU-M  
C11544\_SATU-W



**CUTE-3**  
D= 35 MM (3UP)  
PMMA

**CREE XP-E / XP-G**  
C10754\_CUTE-3-SS  
C10755\_CUTE-3-M  
C10756\_CUTE-3-W

**CREE XT-E**  
C10754\_CUTE-3-SS  
C10755\_CUTE-3-M  
C10756\_CUTE-3-W



**CUTE-4**  
D= 35 MM (4UP)  
PMMA

**CREE MX6 / MX3**  
C10812\_CUTE-4-M  
C10813\_CUTE-4-W



**GT3**  
D= 35 MM (3UP)  
PMMA

**CREE XP-E / XP-G**  
C10891\_GT3-S  
C10892\_GT3-M  
C10893\_GT3-W  
C11624\_GT3-WW



**GT4**  
D= 35 MM (4UP)  
PMMA

**CREE XP-E / XP-G**  
C10921\_GT4-S  
C10922\_GT4-M  
C10923\_GT4-W  
C10975\_GT4-WW

**CREE XB-D**  
C10921\_GT4-S  
C10922\_GT4-M  
C10923\_GT4-W  
C10924\_GT4-WW



**ANNA-3**  
D= 40 MM (3UP)  
PMMA

**CREE XP-E / XP-G**  
C11710\_ANNA-40-3-S  
C11711\_ANNA-40-3-M  
C11712\_ANNA-40-3-W

**CREE XB-D**  
C11711\_ANNA-40-3-M  
C11712\_ANNA-40-3-W

**CREE XT-E**  
C11711\_ANNA-40-3-M  
C11712\_ANNA-40-3-W



**ANNA-4**  
D= 40 MM (4UP)  
PMMA

**CREE XP-E / XP-G**  
C11793\_ANNA-40-4-S  
C11794\_ANNA-40-4-M  
C11795\_ANNA-40-4-W

**CREE XB-D**  
C11794\_ANNA-40-4-M  
C11795\_ANNA-40-4-W

**CREE XT-E**  
C11794\_ANNA-40-4-M  
C11795\_ANNA-40-4-W

# MULTIPLE LENSES



**ANNA-5**  
D= 40 MM (5UP)  
PMMA

**CREE XP-E / XP-G**  
C11713\_ANNA-40-5-S  
C11714\_ANNA-40-5-M  
C11715\_ANNA-40-5-W

**CREE XB-D**  
C11714\_ANNA-40-5-M  
C11715\_ANNA-40-5-W

**CREE XT-E**  
C11714\_ANNA-40-5-M  
C11715\_ANNA-40-5-W



**ANNA-7**  
D= 40 MM (7UP)  
PMMA

**CREE XP-E / XP-G**  
C11716\_ANNA-40-7-S  
C11717\_ANNA-40-7-M  
C11718\_ANNA-40-7-W

**CREE XB-D**  
C11717\_ANNA-40-7-M  
C11718\_ANNA-40-7-W

**CREE XT-E**  
C11717\_ANNA-40-7-M  
C11718\_ANNA-40-7-W



**ANNA-4**  
D= 50 MM (4UP)  
PMMA

**CREE XP-E / XP-G**  
C11799\_ANNA-50-4-S  
C11800\_ANNA-50-4-M  
C11801\_ANNA-50-4-W

**CREE XB-D**  
C11800\_ANNA-50-4-M  
C11801\_ANNA-50-4-W

**CREE XT-E**  
C11800\_ANNA-50-4-M  
C11801\_ANNA-50-4-W



**ANNA-6**  
D= 40 MM (6UP)  
PMMA

**CREE XP-E / XP-G**  
C11805\_ANNA-40-6-S  
C11806\_ANNA-40-6-M  
C11807\_ANNA-40-6-W

**CREE XB-D**  
C11806\_ANNA-40-6-M  
C11807\_ANNA-40-6-W

**CREE XT-E**  
C11806\_ANNA-40-6-M  
C11807\_ANNA-40-6-W



**ANNA-3**  
D= 50 MM (3UP)  
PMMA

**CREE XP-E / XP-G**  
C11606\_ANNA-50-3-S  
C11607\_ANNA-50-3-M  
C11608\_ANNA-50-3-W

**CREE XB-D**  
C11607\_ANNA-50-3-M  
C11608\_ANNA-50-3-W

**CREE XT-E**  
C11607\_ANNA-50-3-M  
C11608\_ANNA-50-3-W



**ANNA-5**  
D= 50 MM (5UP)  
PMMA

**CREE XP-E / XP-G**  
C11612\_ANNA-50-5-S  
C11613\_ANNA-50-5-M  
C11614\_ANNA-50-5-W

**CREE XB-D**  
C11613\_ANNA-50-5-M  
C11614\_ANNA-50-5-W

**CREE XT-E**  
C11613\_ANNA-50-5-M  
C11614\_ANNA-50-5-W



**ANGIE**  
D= 34 MM (4UP)  
PMMA

**CREE XP-E / XP-G**  
C12285\_ANGIE-S  
C12286\_ANGIE-M  
C12287\_ANGIE-M2  
C12288\_ANGIE-W



**PENTA**  
D= 35 MM (5UP)  
PMMA

**CREE MX6 / MX3**  
C11281\_NIS83-MX-5-D  
C10472\_RER-5-M  
C10814\_NIS83-MX-5-W



**PENTA**  
D= 35 MM (5UP)  
PMMA

**CREE XP-E / XP-G**  
F10390\_PENTA-5-M  
C10472\_RER-5-M

## MULTIPLE LENSES



**ANNA-6**  
D= 50 MM (6UP)  
PMMA

**CREE XP-E / XP-G**

C11811\_ANNA-50-6-S  
C11812\_ANNA-50-6-M  
C11813\_ANNA-50-6-W

**CREE XB-D**

C11812\_ANNA-50-6-M  
C11813\_ANNA-50-6-W

**CREE XT-E**

C11812\_ANNA-50-6-M  
C11813\_ANNA-50-6-W



**ANNA-7**  
D= 50 MM (3UP)  
PMMA

**CREE XP-E / XP-G**

C11670\_ANNA-7-S  
C11679\_ANNA-7-M  
C11682\_ANNA-7-W

**CREE XB-D**

C11679\_ANNA-7-M  
C11682\_ANNA-7-W

**CREE XT-E**

C11679\_ANNA-7-M  
C11682\_ANNA-7-W



**TAMPA**  
D= 38 MM (7UP)  
PMMA

**CREE MX6 / MX3**

C10373\_NIS83-MX-7-M  
C10633\_NIS83-MX-7-MD  
C10585\_NIS83-MX-7-W  
C10586\_NIS83-MX-7-WW



**MARTHA / DOLLY**  
D= 50 MM (3UP)  
PMMA

**CREE MX6 / MX3**

C10436\_NIS83-MX-3-M  
C10364\_NIS83-MX-3-W



**MARTHA / TUIJA**  
D= 50 MM (3UP)  
PMMA

**CREE XB-D**

C11191\_TUIJA-3-W  
C11192\_TUIJA-3-SS  
C11193\_TUIJA-3-M  
C12150\_TUIJA-3-M2

**CREE XP-E / XP-G**

C11192\_TUIJA-3-SS  
C11193\_TUIJA-3-M  
C11191\_TUIJA-3-W



**QUAK**  
D= 50 MM (4UP)  
PMMA

**CREE MC-E**

C10702\_ROCKET-4-W

**CREE MX6 / MX3**

C10385\_NIS83-MX-4-SS  
C10386\_NIS83-MX-4-M  
C10387\_NIS83-MX-4-W



**EMY**  
D= 50 MM (6UP)  
PMMA

**CREE MX6 / MX3**

C10535\_NIS83-MX-6-S



**SANDRA**  
D= 70 MM (12UP)  
PMMA

**CREE XP-E / XP-G**

C11814\_SANDRA-12-M  
C11700\_SANDRA-12-W



## STREET LIGHTING



**STRADA-A**  
15.4 MM X 19.6 MM  
PMMA

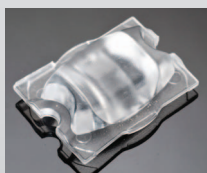
CREE XP-E / XP-G  
C10818\_STRADA-A  
CA10823\_STRADA-A

C12219\_STRADA-A2  
C12220\_STRADA-A2



**STRADA-DN**  
15.4 MM X 19.6 MM  
PMMA

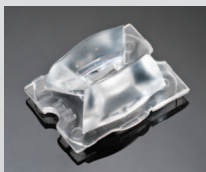
CREE MX6 / MX3  
C11244\_STRADA-DN  
CA11245\_STRADA-DN



**STRADA-B/B2**  
15.4 MM X 19.6 MM  
PMMA

CREE XP-E / XP-G  
C10926\_STRADA-B  
CA10927\_STRADA-B

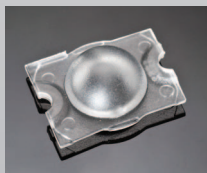
C10949\_STRADA-B2  
CA10950\_STRADA-B2



**STRADA-DW**  
15.4 MM X 19.6 MM  
PMMA

CREE XP-E / XP-G  
C11255\_STRADA-DW  
CA11256\_STRADA-DW

CREE MX6 / MX3  
C11242\_STRADA-DW  
CA11243\_STRADA-DW



**STRADA-C/C2**  
15.5 MM X 19.6MM  
PMMA

CREE XP-E / XP-G  
C11252\_STRADA-C2  
CA11253\_STRADA-C2

CREE MX6 / MX3  
C11277\_STRADA-C  
CA11348\_STRADA-C

# STREET LIGHTING



**STRADA-T-DN**  
15.5 MM X 19.6 MM  
PMMA

**CREE XP-E / XP-G**  
C11415\_STRADA-T-DN  
CA11416\_STRADA-T-DN

**CREE XB-D**  
C11415\_STRADA-T-DN  
CA11416\_STRADA-T-DN

**CREE MX6 / MX3**  
C12329\_STRADA-T-DN  
CA12332\_STRADA-T-DN



**STRADA-T-DW**  
15.5 MM X 19.6 MM  
PMMA

**CREE XP-E / XP-G**  
C11425\_STRADA-T-DW  
CA11426\_STRADA-T-DW

**CREE XB-D**  
C11425\_STRADA-T-DW  
CA11426\_STRADA-T-DW

**CREE MX6 / MX3**  
C12331\_STRADA-T-DW  
CA12333\_STRADA-T-DW



**STRADA-FW**  
15.5 MM X 19.6 MM  
PMMA

**CREE XP-E / XP-G**  
C12086\_STRADA-FW  
CA12087\_STRADA-FW

**CREE XT-E**  
C12086\_STRADA-FW  
CA12087\_STRADA-FW

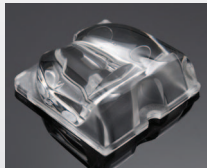
**CREE MX6 / MX3**  
C12226\_STRADA-FW  
CA12238\_STRADA-FW



**STRADA-FT**  
15.5 MM X 19.6 MM  
PMMA

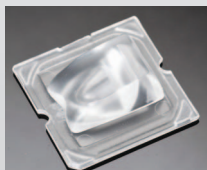
**CREE XP-E / XP-G**  
C12049\_STRADA-FT  
CA12050\_STRADA-FT

**CREE XB-D**  
C12049\_STRADA-FT  
CA12050\_STRADA-FT



**STRADA-SQ-A-T**  
25 MM X 25 MM  
PMMA

**CREE XM-L**  
C12410\_STRADA-SQ-A-T  
CA12411\_STRADA-SQ-A-T

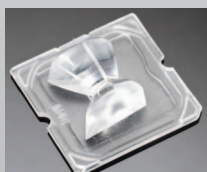


**STRADA-SQ-T-DN**  
25 MM X 25 MM  
PMMA

**CREE XP-E / XP-G**  
C11816\_STRADA-SQ-T-DN  
CA11817\_STRADA-SQ-T-DN

**CREE XT-E**  
C11889\_STRADA-SQ-T-DN  
CA11890\_STRADA-SQ-T-DN

**CREE XM-L**  
C11889\_STRADA-SQ-T-DN  
CA11890\_STRADA-SQ-T-DN



**STRADA-SQ-T-DW**  
25 MM X 25 MM  
PMMA

**CREE XP-E / XP-G**  
C11818\_STRADA-SQ-T-DW  
CA11819\_STRADA-SQ-T-DW

**CREE XT-E**  
C11891\_STRADA-SQ-T-DW  
CA11892\_STRADA-SQ-T-DW  
C11962\_STRADA-SQ-T-DW  
CA11963\_STRADA-SQ-T-DW

**CREE XM-L**  
C11891\_STRADA-SQ-T-DW  
CA11892\_STRADA-SQ-T-DW  
C11962\_STRADA-SQ-T-DW  
CA11963\_STRADA-SQ-T-DW

## STREET LIGHTING



**STRADA 2X2**  
50 MM X 50 MM  
PMMA

**CREE XP-E / XP-G**  
C12361\_HB-2X2

**CREE XT-E**  
C12361\_HB-2X2

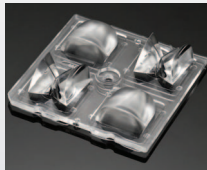
**CREE XM-L**  
C12361\_HB-2X2



**STRADA 2X2-A-T**  
50 MM X 50 MM  
PMMA

**CREE XT-E**  
C12419\_STRADA-2x2\_A-T

**CREE XM-L**  
C12419\_STRADA-2x2\_A-T



**STRADA 2X2-DNW**  
50 MM X 50 MM  
PMMA

**CREE XT-E**  
C12360\_2X2-DNW

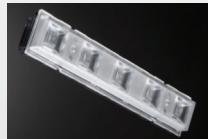
**CREE XM-L**  
C12360\_2X2-DNW



**STRADA 2X2-DWC**  
50 MM X 50 MM  
PMMA

**CREE XT-E**  
C12362\_STRADA\_2X2-DWC

**CREE XM-L**  
C12362\_STRADA\_2X2-DWC



**HB-5X1**  
123 MM X 25 MM  
PMMA

**CREE XP-E / XP-G**  
C12345\_HB-5X1

**CREE XT-E**  
C12345\_HB-5X1

**CREE XM-L**  
C12345\_HB-5X1



**STRADA-T-6X1**  
25.2 MM X 120 MM  
PMMA

**CREE XP-E / XP-G**  
C11918\_STRADA-T-6X1-DNW  
C12449\_STRADA-T-6X1-DWC

**CREE XB-D**  
C11918\_STRADA-T-6X1-DNW  
C12449\_STRADA-T-6X1-DWC

Learn more about STRADA optics at

[http://www.ledil.com/sites/default/files/Documents/Application%20notes/Strada\\_lens\\_guide.pdf](http://www.ledil.com/sites/default/files/Documents/Application%20notes/Strada_lens_guide.pdf)



#### BEAM ANGLE RANGE (FWHM)

Spot (RS, SS, S)	3-18 degrees
Medium (D, M, M2)	19 - 35 degrees
Wide (W, W2)	36 - 45 degrees
Extra Wide (WW)	46 - 63 degrees
WWW	64 -> degrees
O	Oval
REC	Rectangular

#### PREFIXES

**F** = FI / optic or holder

**FA** = FI / assembled optic+holder / tape

**FN** = FI / unassembled optic+holder / no tape

**FX** = FI / unassembled optic+holder / tape

**FP** = FI / assembled optic+holder/no tape

**FCA** = FI / assembled optic+holder / tape

**FCN** = FI / unassembled optic+holder / no tape

**FCX** = FI / unassembled optic+holder / tape

FI = Finland, Country of Origin

**C** = CN / optic or holder

**CA** = CN / assembled optic+holder / tape

**CN** = CN / unassembled optic+holder / no tape

**CX** = CN / unassembled optic+holder / tape

**CP** = CN / assembled optic+holder / no tape

CN = China, Country of Origin

Qualification of LEDs with our optics occurs every day, please visit [www.ledil.com](http://www.ledil.com) for the latest information. Contact [sales@ledil.com](mailto:sales@ledil.com) if you do not see an optic qualified for your LED of choice.





## Our Company

The only true specialist in the field of secondary optics for high-power and lighting-class LEDs, LEDiL has been producing precision-engineered optics and reflectors since 2002 and now boasts nearly 1000 standard products optimized for use with LEDs produced by the world's prominent LED manufacturers.

Custom solutions are also commonly developed with minimal end-user tooling investment required. With production in Finland and China and a global network of authorized distributors, LEDiL's products are market-competitive and readily available.



## Quality

Innovative and skillful designers engineer quality into every LEDiL optic. All our lenses are produced by a unique injection molding process, which ensures high optical quality, performance, lifetime and functionality. Our optics can work in extreme conditions.