

Applications for Sullins Connectors:

- Burn-in Ovens and Test Equipment
- Electronic Component Testing
- Data Storage Servers
- Communications Equipment
- Networking Equipment
- LED Applications
- Medical Devices
- And more...

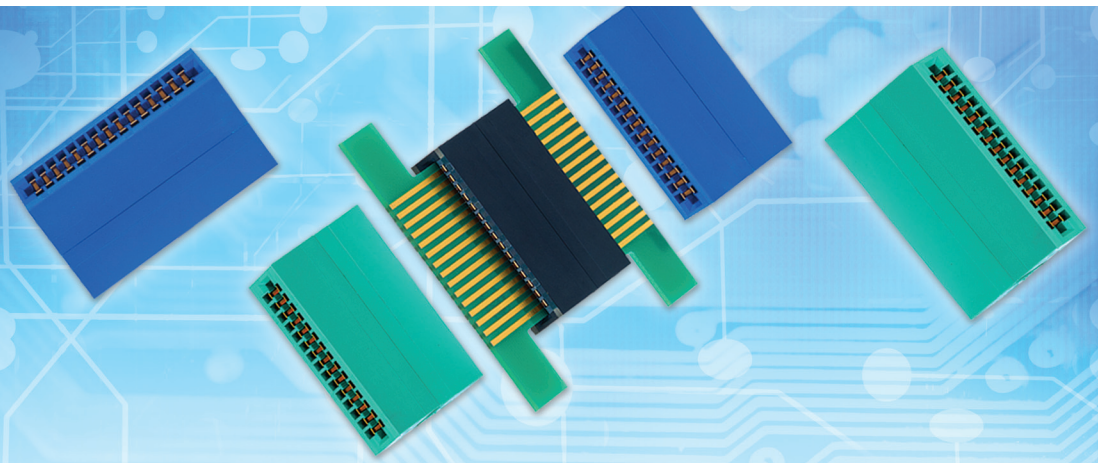
The Sullins Advantage

- Five-day Lead Time*
- Free Samples – Fast!
- High Quality and Reliable Connectors
- Engineering Design and Technical Support
- Connector Experts at Your Service Assist with Specific Project Requirements
- Design and Build Custom Parts to Suit Your Needs
- RoHS Compliance



Order Samples and Products:

www.sullinscorp.com
 info@sullinscorp.com
 760.744.0125
 888.774.3100 toll-free



Dual Edge Connector **NEW!**

Specifications:

- Now available in 0.100"[2.54mm] with 5-60 pins per row
 - 0.125"[3.18mm] and 0.156"[3.96mm] contact centers, with up to 40 pins per row available upon special request
- Supports an operating temperature of up to 150°C
- Fits 0.062"[1.57mm]-thick PC boards in both card slots
 - Other board thicknesses available upon special request
- Mounting styles include straddle mount, flush mounting holes, or no mounting
 - Other mounting options available upon special request
- Standard 30u" selective gold plating promotes long lasting usage
 - Other plating options available upon request
- Current rating: 3 Amperes per contact
- Contact resistance: 30 Milliohms max
- Insulation resistance: 5000 Megohms

Features & Benefits:

- Reliable high temperature board-to-board interconnection up to 150°C
- Easily replaceable without the need of desoldering
- High signal integrity connector interface for R&D and Life Tests applications
- HTOL, HAST & LTOL and in-line production and burn-in testing compatible
- Superior durability of 500 mating cycles



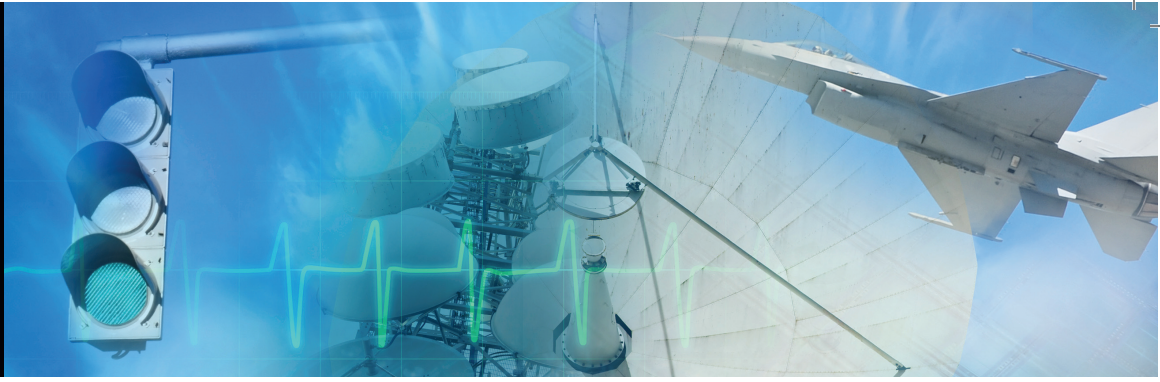
www.sullinscorp.com

USA HQ | 801 E. Mission Rd., San Marcos, CA 92069, USA | +1-760-744-0125 | fax +1-760-744-6081
 Taiwan | 10F, No. 268, Fuxing S. Rd., Sec. 2, Taipei, Taiwan | +886-2-2738-7377 | fax +886-2-2738-3586

*More customized specifications may require additional time to complete.

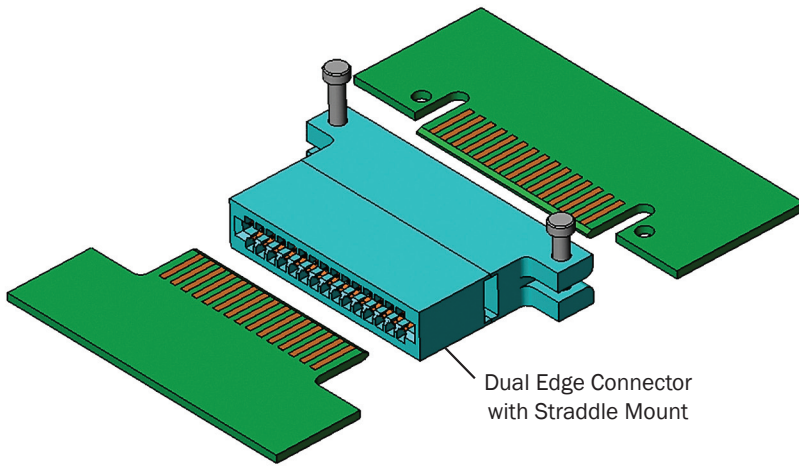
©2010 Sullins Connector Solutions

Product Configuration Diagrams

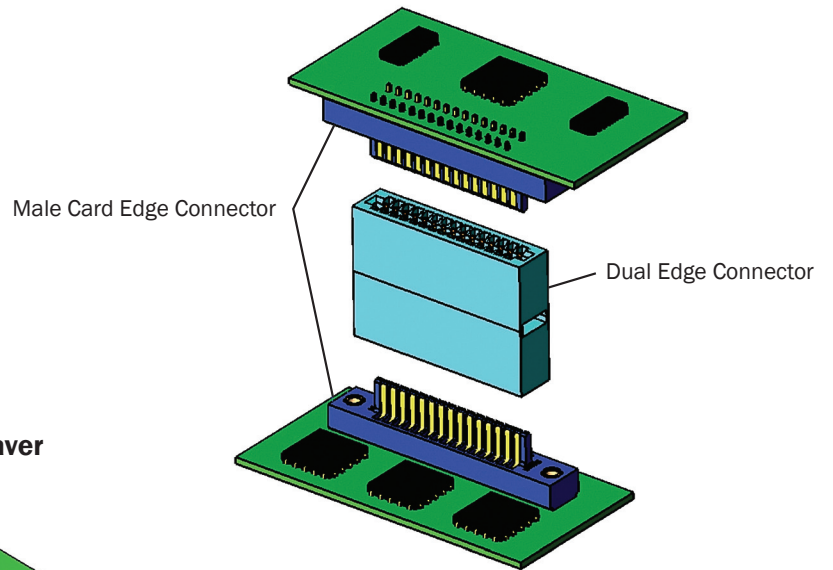


Dual Edge Connector

Dual Edge Connector for Board-to-Board Extensions



Dual Edge Connector Acting as a Board Saver for Board Stacking Applications



Dual Edge Connector Acting as a Board Saver in Board Extension Applications

