

**SHARP**<sup>®</sup>

**2016 PRODUCT LINE-UP**

**INDUSTRIAL STRENGTH**

**LCDs**

[SharpSMA.com/IndustrialLCD](http://SharpSMA.com/IndustrialLCD)

# IT'S NOT A ONE-SIZE-FITS-ALL WORLD

## **When it comes to finding the perfect display, it's all about options.**

At Sharp, we continue working hard to expand our Industrial Application (IA) display line-up to provide solutions for the widest possible variety of requirements.

Our IA LCDs range from 3.5-inch to 23.5-inch (diagonal). From stock IA panels to premium out-of-the box parts to our budget-friendly Value IA LCDs, we aim to meet both your specification and budgetary needs.



## Standard IA

### PICK YOUR PERFECT DISPLAY

Our stock IA parts offer a range of features and sizes that enable you to develop products that shine in demanding environments. They also provide the perfect building block for enhanced, high-performance solutions.

## Value IA

### BUDGET-SENSITIVE PROJECT?

Integrate key features of Sharp's Industrial Strength LCDs into your designs with these right-priced panels. Available in many of the most popular diagonal sizes.

## IA + VAP

### DIAL-IN YOUR PREMIUM SOLUTION

Sharp works with a network of Value-Added Providers to develop enhanced solutions for your product's requirements - all built on Sharp Industrial Application LCDs. Let's talk about your needs for multi-touch PCAP, High Brightness displays, and more.

## Automotive Grade IA

### "ROAD READY" FOR *TRADITIONAL* IA PRODUCTS

Sharp Automotive panels are ideal for traditional IA solutions that require extreme viewability in high-ambient or direct light. They also hang tough with rugged shock and vibration specifications.

## Performance Consumer

### A NEW LEVEL OF "WOW" IN IA

High-performance consumer LCDs for smartphones and tablet computers are available for large-volume customers with product lines adapted to quick-turn life cycles. Contact your Sharp Representative to determine if your program is a fit.

# INDUSTRIAL STRENGTH...

RESISTANCE TO **VIBRATION** **HIGH** BRIGHTNESS  
**HIGH** CONTRAST

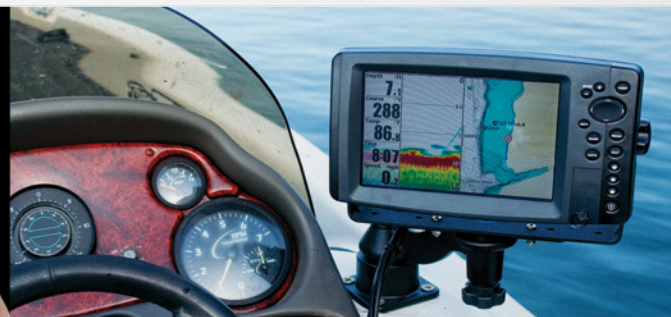
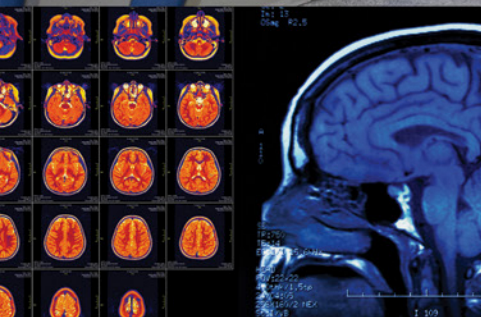
**WIDE** TEMPERATURE RANGE  
**WIDE** VIEWING ANGLES

Your products have to stand up to the toughest environments. Sharp's line-up of Industrial Application (IA) displays deliver the specifications to meet the challenge...and then some.



**ADVERTISING**  
**ATM**  
**AUTOMOTIVE**  
**CLIMATE CONTROL**  
**FACTORY AUTOMATION**  
**GAMING/LOTTERY**  
**HANDHELD DEVICES**  
**HEALTH/FITNESS/SPORTS**  
**HOME AUTOMATION**  
**IN-FLIGHT ENTERTAINMENT**

**INDUSTRIAL CONTROLS**  
**KIOSKS**  
**MEDICAL DEVICES**  
**MULTIMEDIA**  
**POS TERMINALS**  
**NAVIGATION/TRANSPORTATION**  
**TEST AND MEASUREMENT**  
**WEARABLE TECHNOLOGY**  
**WHITE GOODS**  
**...AND MORE!**



**...FOR ANY OCCASION**

# Small Diagonal LCDs

Panel Size (Diagonal)	Part Number	Resolution   Features
3.5-inch	LQ035Q3DY01	QVGA   PSV   600 Nits   Portrait Mode
3.7-inch	LS037V7DW05	VGA   QVGA   ASV   4-Wire Resistive Touch   Portrait Mode
3.7-inch	LS037V7DW06	VGA   QVGA   ASV   Portrait Mode
4.0-inch	LQ040Y3DX80B	WVGA   ISP   Portrait Mode   <b>VALUE IA</b>
4.2-inch	LQ042T5DZ13K	WQVGA   ASV   <b>AUTOMOTIVE IA</b>
4.3-inch	LQ043T1DG28	WQVGA   4-Wire Resistive Touch
4.3-inch	LQ043T1DG29	WQVGA
4.3-inch	LQ043Y1DX07	WVGA   ASV   Portrait Mode
4.3-inch	LQ043Y1DY01	WVGA   ASV   PSV   Portrait Mode
5.0-inch	LQ050Y3DC02	WVGA   <b>VALUE IA</b>
5.7-inch	LQ057Q3DC03A	QVGA
6.4-inch	LQ064V3DG06	VGA
6.5-inch	LQ065Y5DZ01A	WVGA   ASV   <b>AUTOMOTIVE IA</b>

# Medium Diagonal LCDs

Panel Size (Diagonal)	Part Number	Resolution   Features
7.0-inch	LQ070K1LX80	WXGA   LVDS   ASV   Portrait Mode   <b>VALUE IA</b>
7.0-inch	LQ070Y3DG3A	WVGA
7.0-inch	LQ070Y3DG3B	WVGA   4-Wire Resistive Touch

## Medium Diagonal LCDs, *cont.*

Panel Size (Diagonal)	Part Number	Resolution   Features
7.0-inch	LQ070Y3LG02	WVGA   LVDS   Extended Temp. Range
7.0-inch	LQ070Y3LG05*	WVGA   LVDS   <b>VALUE IA</b>
7.0-inch	LQ070Y3LG4A	WVGA   LVDS
7.0-inch	LQ070Y3LW01	WVGA   ASV   LVDS
8.0-inch	LQ080Y5DZ03A*	WVGA   ASV   <b>AUTOMOTIVE IA (645 Nits)</b>
8.0-inch	LQ080Y3LW01	WVGA   ASV   LVDS   Extended Temp. Range   650 Nits
8.4-inch	LQ084S3LG03*	SVGA   LVDS
8.4-inch	LQ084V1DG43*	VGA
8.5-inch	LQ085Y3DW01	WVGA   ASV
9.0-inch	LQ090Y3DG01*	WVGA   <b>VALUE IA</b>

## Large Diagonal LCDs

Panel Size (Diagonal)	Part Number	Resolution   Features
10.1-inch	LQ101K1LY04	WXGA   ASV   LVDS
10.4-inch	LQ104S1DG2C*	SVGA   Digital
10.4-inch	LQ104S1DG34*	SVGA   Digital
10.4-inch	LQ104S1LG75*	SVGA   LVDS   <b>HIGH BRIGHT (1000 Nits)</b>
10.4-inch	LQ104S1LG81*	SVGA   LVDS
10.4-inch	LQ104V1DG81*	VGA   Digital
10.4-inch	LQ104V1LG81*	VGA   LVDS

\*Includes built-in LED Driver

Want more product details? Visit [SharpSMA.com/IndustrialLCD](http://SharpSMA.com/IndustrialLCD).

# Large Diagonal LCDs, *cont.*

Panel Size (Diagonal)	Part Number	Resolution   Features
12.1-inch	LQ121K1LG52*	WXGA   LVDS
12.1-inch	LQ121S1DG81*	SVGA   Digital
12.1-inch	LQ121S1LG84*	SVGA   LVDS
12.1-inch	LQ121S1LG86*	SVGA   LVDS   <b>HIGH BRIGHT (1500 Nits)</b>
12.1-inch	LQ121S1LG88*	SVGA   LVDS   <b>VALUE IA</b>
12.1-inch	LQ121X3LG02	XGA   LVDS   <b>HIGH BRIGHT (1200 Nits)</b>
15.0-inch	LQ150X1LG11*	XGA   LVDS   <b>HIGH BRIGHT (600 Nits)</b>
15.0-inch	LQ150X1LG91*	XGA   LVDS
15.0-inch	LQ150X1LG96*	XGA   LVDS   <b>HIGH BRIGHT (100 Nits)</b>
15.0-inch	LQ150X1LW94*	XGA   LVDS   ASV
15.0-inch	LQ150X1LX95*	XGA   LVDS   ASV   UL Certified
15.0-inch	LQ150X1LX96*	XGA   ASV   LVDS   UL Certified   <b>HIGH BRIGHT (1000 Nits)</b>
15.6-inch	LQ156M1LG21*	FHD   Selectable 300/350/400/600 Nits
15.6-inch	LQ156M3LW01*	FHD   ASV
15.6-inch	LQ156T3LW03*	HD   ASV
18.5-inch	LQ185M3LW01*	FHD   ASV   LVDS   Available Q1 2017
19.0-inch	LQ190E1LW52	SXGA   ASV   LVDS
19.0-inch	LQ190E1LX75T*	SXGA   LVDS   ASV   UL Certified
20.1-inch	LQ201U1LW32*	UXGA   ASV   LVDS   Color
23.1-inch	LQ231U1LW31*	UXGA   ASV   LVDS   Monochrome

\*Includes built-in LED Driver

# LCD TECHNOLOGY LEADERSHIP

From high-resolution, energy-saving IGZO displays to Sharp's new Free Form Display, which enables a display in virtually any shape, Sharp continues its role as a display technology trailblazer. We pioneered the concept of Industrial Application (IA) LCDs, and continue to complement our rugged IA specifications with innovative Sharp technology advances.

## Progressive Super View (PSV)

PSV enables direct sunlight viewability with brightness settings as low as 100 nits. Save power, decrease heat from the backlight, and enjoy images free of parallax or metallic appearance.

## Advanced Super View (ASV)

Delivering 170° x 170° viewing angles, ASV leverages increased contrast to render consistent color and virtually washout-free images, even in dynamic and demanding industrial applications.

## Memory LCD

This groundbreaking, ultra-low power Sharp LCD technology enables long battery life, high resolution, and lightweight design for wearables and other small-screen applications. Visit [SharpMemoryLCD.com](http://SharpMemoryLCD.com) for more information.

Plus, other new innovations COMING SOON.

# WHO'S BEHIND YOUR LCD?

- Global infrastructure
- Strength in manufacturing
- Optimized distribution model
- Sharp Fabs
- Experience in almost every industry
- Long product lifecycles
- U.S.-based Sales and Support
- Peace of mind

## When you choose a technology partner, you are investing in more than just a part.

Sharp's global infrastructure enables long product lifecycles. Our warranties mean you can count on us every step of the way.

Plus, our deep engineering resources give you the boost you need to get to market quickly. Sharp technical support includes dedicated experts in your region who are ready for your call.

### **Our Industrial Application (IA) displays are backed with Industrial-Strength documentation:**

- Incoming Inspection Standards (IIS)
- Full Product Specifications
- Reliability Test Reports
- CAD drawings
- UL Material and Components Parts Lists



**MAKE IT SHARP.**

# LET'S FIND YOUR PERFECT **LCD SOLUTION**

For more information:

- Contact your **Sharp Representative** or **Distributor**
- Visit **[www.SharpSMA.com](http://www.SharpSMA.com)**
- Email **[IndustrialLCD@SharpSEC.com](mailto:IndustrialLCD@SharpSEC.com)**

## **SHARP**<sup>®</sup>

### **HEADQUARTERS**

5700 NW Pacific Rim Blvd.  
Camas, WA 98607  
Phone: (1) 360-834-2500  
Fax: (1) 360-834-8903

### **WESTERN REGION**

1980 Zanker Rd.  
San Jose, CA 95112  
Phone: (1) 408-436-4900  
Fax: (1) 408-436-0924

4 Hutton Center, Ste. 800  
Santa Ana, CA 92707  
Phone: (1) 657-235-3779  
Fax: (1) 657-235-3780

### **CENTRAL REGION**

85 W. Algonquin Rd., Ste. 280  
Arlington Heights, IL 60005  
Phone: (1) 847-258-2750  
Fax: (1) 847-439-2479

One Towne Square, Ste. 200  
Southfield, MI 48076  
Phone: (1) 248-663-5720  
Fax: (1) 248-663-5750

Braker Pointe, Bldg. #1  
10801 N. Mo-Pac Expy., Ste. 370  
Austin, TX 78759  
Phone: (1) 512-795-9395  
Fax: (1) 512-795-9685

### **EASTERN REGION**

285 Billerica Rd., Ste. 202  
Chelmsford, MA 01824  
Phone: (1) 360-834-2500  
Fax: (1) 978-256-2237

8000 Regency Parkway, Ste. 280  
Cary, NC 27518  
Phone: (1) 919-460-0695  
Fax: (1) 919-460-0795



## TALK TO US.